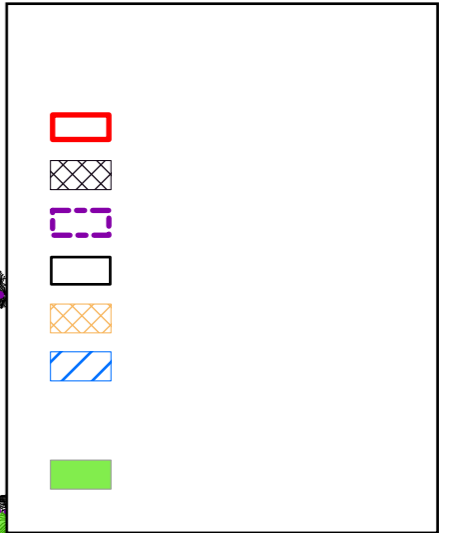
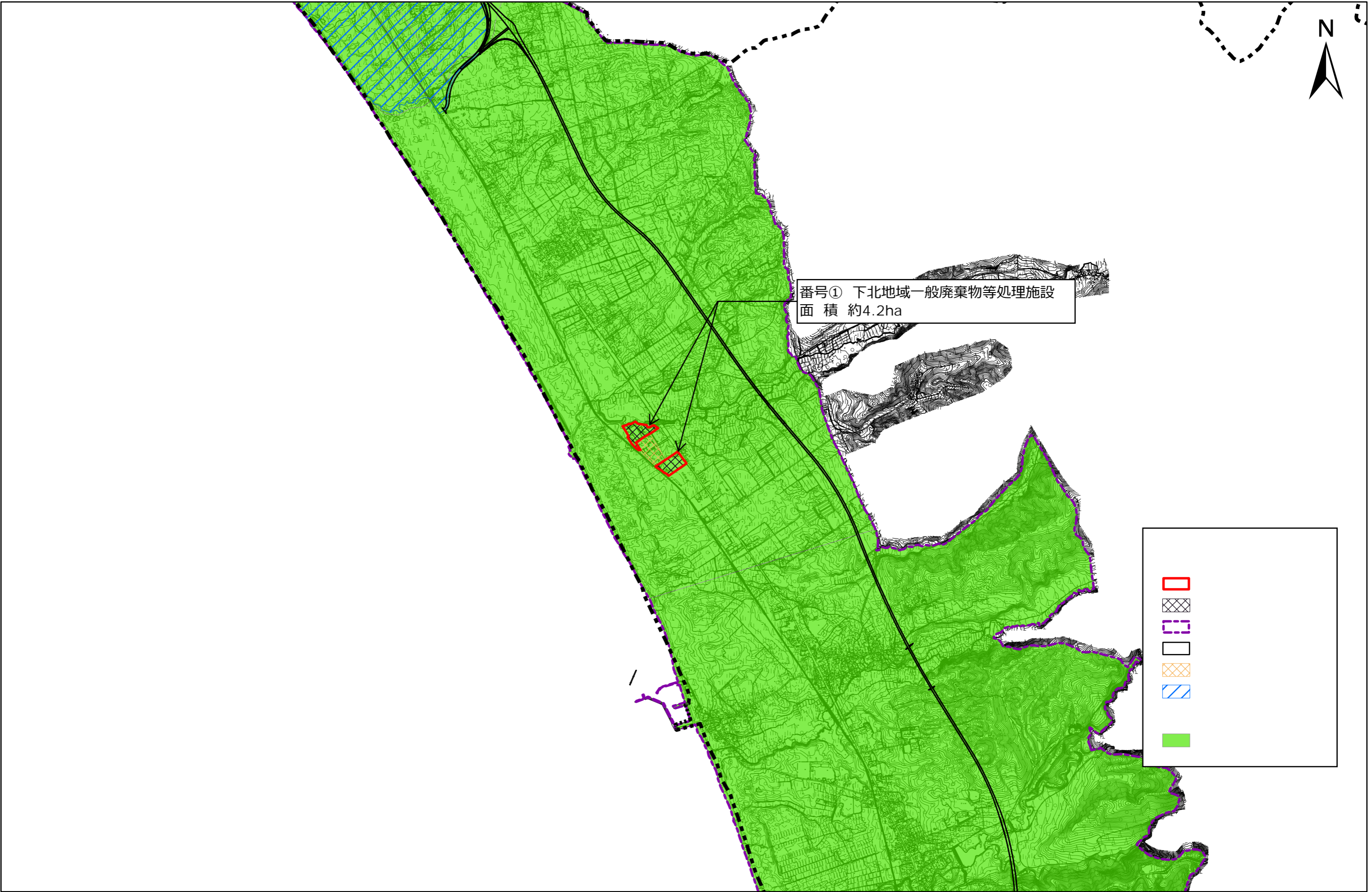


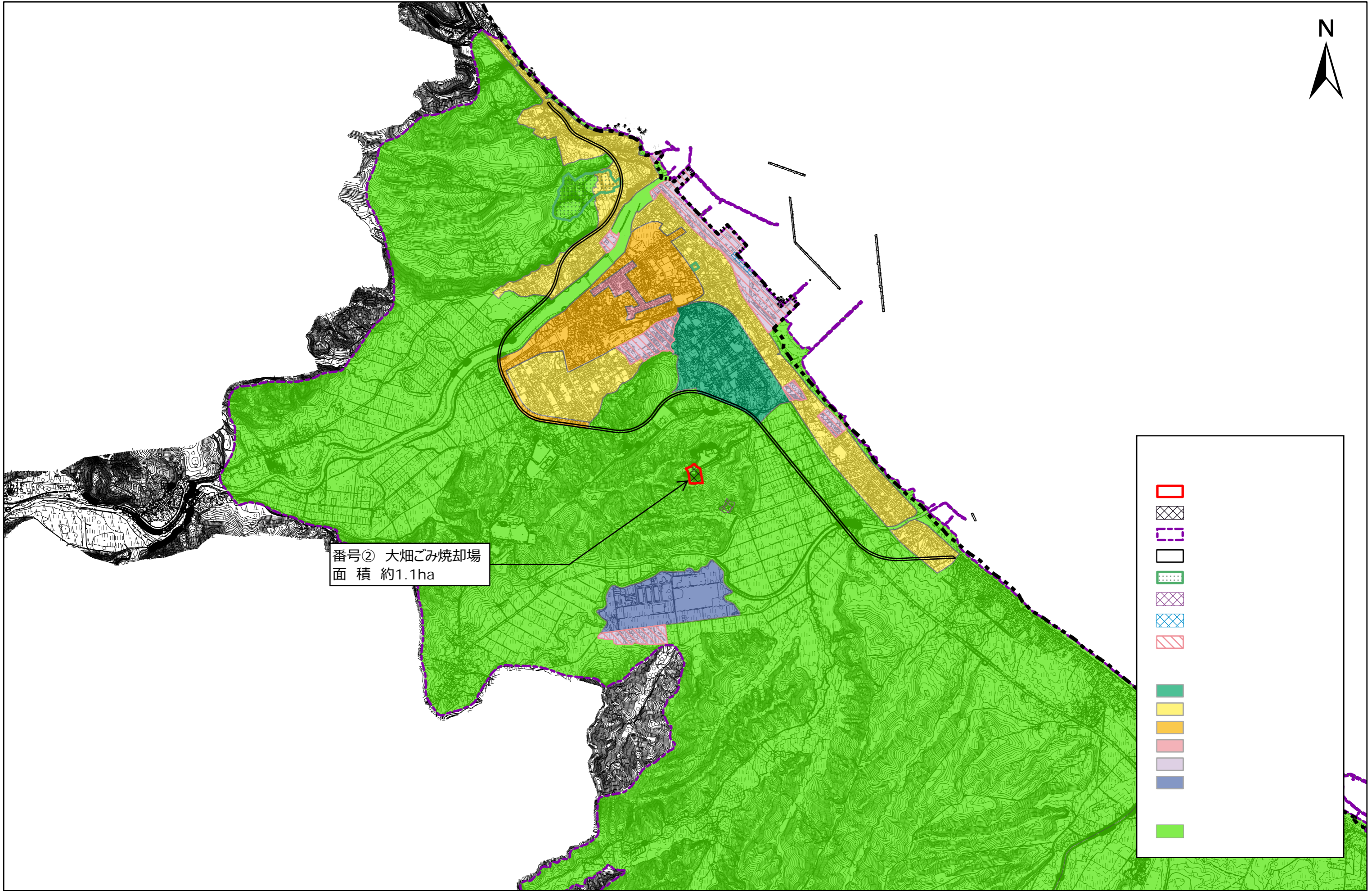


番号① 下北地域一般廃棄物等処理施設  
面積 約4.2ha

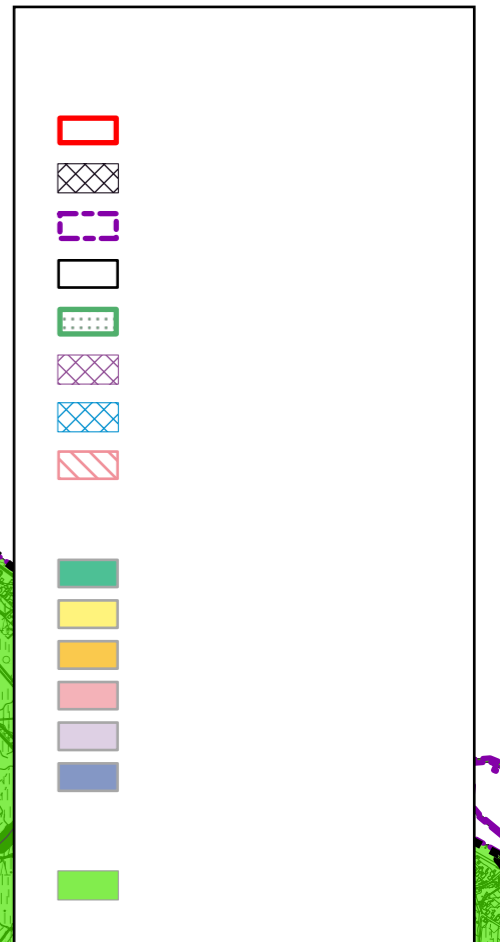


1: 25,000<sup>0</sup> 500 1,000 2,000 3,000 4,000 5,000





番号② 大畑ごみ焼却場  
面積 約1.1ha



1: 25,000<sup>0</sup> 500 1,000 2,000 3,000 4,000 5,000